

Vortex® VX

BENEFITS:

- > Latex-free/MRI compatible
- > Atraumatic tip catheter—tapered to reduce vessel trauma
- > Blue boot locking mechanism—our easy-to-use technology gives you a secure feel and snug fit
- > Intermediate body size—the Vortex® VX is available in single and low profile models

VORTEX® VX TRAY COMPONENTS:

- > (1) Vortex® VX Titanium Port System
- > (1) Silicone catheter
- > (2) Locking mechanisms (detached models)
- > (1) Non-coring needle, 22 Ga
- > (1) Introducer needle, 18 Ga
- > (1) Vein pick
- > (1) PeelPro™ PTFE Introducer
- > (1) 0.035" x 50 cm Guidewire
- > (1) Infusion set
- > (1) Blunt needle (detached models)
- > (1) Tunneler
- > (2) 10cc Syringes

100% Guaranteed Against Sludge Buildup—Ask your RITA sales representative for details.



VORTEX®:

Tangential outlet and clear-flow technology set up efficient flushing action to hyper-cleanse the entire chamber, resist sludge build-up and reduce occlusions and infections.



CONVENTIONAL:

Perpendicular outlet produces chaotic flow and inefficient flushing, with square corners that promote the formation of sludge within dead space.

IN A CLINICAL STUDY*

the Vortex® port had:

7% Occlusions as % of total access attempts
19% Interventions as % of total access attempts

Conventional ports had:

26% Occlusions as % of total access attempts
62% Interventions as % of total access attempts

* Lead Investigator, "A Randomized, Prospective Trial of Conventional Vascular Ports vs. The Vortex "Clear-Flow" Reservoir Port in Adult Oncology Patients", JVAD, Summer 2000.

Single Titanium Port	French	Part #
Attached silicone catheter with 8FR introducer	7.2	P5305K
Detached silicone catheter with 8FR introducer	7.2	P5355K
Attached silicone catheter with 10FR introducer	9.6	P5405K
Detached silicone catheter with 10FR introducer	9.6	P5455K
Low-Profile Titanium Port	French	Part #
Attached silicone catheter with 6FR introducer	5.1	P12105K
Detached silicone catheter with 6FR introducer	5.1	P12155K
Attached silicone catheter with 8FR introducer	7.2	P12305K
Detached silicone catheter with 8FR introducer	7.2	P12355K

USA > One Horizon Way, Manchester, GA 31816 > tel: 800.472.5221 or 706.846.3126 > fax: 877.467.9501 or 706.846.3146
International > Mechelsesteenweg 251, B-1800 Vilvoorde, Belgium > tel: +32-2 252 12 02 > fax: +32-2 252 14 08

www.ritammedical.com

©2006 RITA Medical Systems, Inc. pn 0163M rev: A

Vortex® EZ & EZ MAX

BENEFITS:

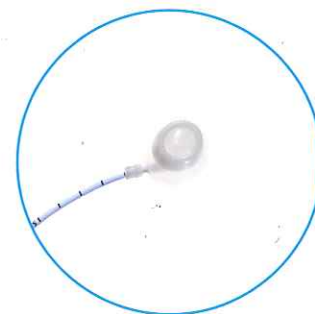
- > 100% MRI compatible
- > Available Fluoromax® catheter—increased visibility aids in confirmation of tip placement
- > Increased catheter accuracy—depth markings every cm through the entire catheter length assist accurate placement. Available in polyurethane and silicone
- > Engineered for ease of use—the Vortex® EZ includes a large target area and greater needle clearance between the septum and the base for larger bore needles
- > Suture anywhere base—a 100% suturable base is built to help make procedures fast and easy
- > Snap-Lock™ mechanism—Snap-Lock™ allows the confirmation of a secure attachment with feel, sight and sound of placement

VORTEX® EZ COMPONENTS:

- > (1) Vortex® EZ Single Plastic Port System
- > (1) Catheter, silicone and polyurethane available
- > (2) Locking mechanisms (detached models)
- > (1) Non-coring needle, 22 Ga
- > (1) Introducer needle, 18 Ga
- > (1) PeelPro™ PTFE Introducer
- > (1) Guidewire, 0.035" x 50 cm
- > (1) LifeGuard™ Safety Infusion Set
- > (1) Tunneler
- > (1) Vein pick
- > (1) Blunt needle (detached models)
- > (2) 10cc Syringes

VORTEX® EZ MAX COMPONENTS:

- > (1) Vortex® EZ Single Plastic Port System
- > (1) Fluoromax® Catheter, silicone and polyurethane available
- > (2) Locking mechanisms
- > (1) Non-coring needle, 22 Ga
- > (1) Introducer needle, 18 Ga
- > (1) PeelPro™ PTFE Introducer
- > (1) Guidewire, 0.035" x 50cm
- > (1) LifeGuard™ Safety Infusion Set
- > (1) Tunneler
- > (1) Vein pick
- > (1) Blunt needle (detached models)
- > (2) 10cc Syringes



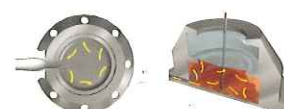
Vortex® EZ MAX

100% Guaranteed Against Sludge Buildup—Ask your RITA sales representative for details.



VORTEX®:

Tangential outlet and clear-flow technology set up efficient flushing action to hyper-cleanse the entire chamber, resist sludge build-up and reduce occlusions and infections.



CONVENTIONAL:

Perpendicular outlet produces chaotic flow and inefficient flushing, with square corners that promote the formation of sludge within dead space.

Vortex® EZ Single Plastic Port	French	Part #
Detached silicone catheter with 8FR introducer	7.5	VOR-S75SD
Attached silicone catheter with 8FR introducer	7.5	VOR-S75SA
Detached silicone catheter with 10FR introducer	9.6	VOR-S96SD
Attached silicone catheter with 10FR introducer	9.6	VOR-S96SA
Detached polyurethane catheter with 8FR introducer	8	VOR-S8PD
Detached polyurethane catheter with 8FR introducer	8	VOR-S8PA

Vortex® EZ MAX Single Plastic Port	French	Part #
Detached FluoroMax® silicone catheter with 8FR introducer	7.5	VORX-S75SD
Detached FluoroMax® silicone catheter with 10FR introducer	9.6	VORX-S96SD
Detached FluoroMax® polyurethane catheter with 8FR introducer	8	VORX-S8PD

USA > One Horizon Way, Manchester, GA 31816 > tel: 800.472.5221 or 706.846.3126 > fax: 877.467.9501 or 706.846.3146
 International > Mechelsesteenweg 251, B-1800 Vilvoorde, Belgium > tel: +32-2 252 12 02 > fax: +32-2 252 14 08

Triumph-1®

BENEFITS:

- > 100 psi rated silicone catheter
- > MRI compatible
- > Latex-free
- > Titanium and plastic models

TRIUMPH-1® TRAY COMPONENTS:

- > (1) Triumph-1® Port System
- > (1) Silicone Catheter
- > (2) Locking mechanisms (detached models)
- > (1) Introducer needle, 18 Ga
- > (1) Vein pick
- > (1) PeelPro™ PTFE Introducer
- > (1) Guidewire, 0.035" x 50 cm
- > (1) Blunt needle, 18 Ga (detached models)
- > (1) Tunneler
- > (2) 10 cc Syringes
- > (1) Non-coring needle, 22 Ga
- > (1) Infusion Set, 20 Ga x 1"



Titanium port with silicone catheter

A top choice with surgeons and oncology patients. With years of proven performance, Triumph-1® ports continue to provide reliable vascular access for thousands of oncology patients. There is a Triumph-1® solution for every vascular access need.

Single Titanium Port	French	Part #
Detached silicone catheter with 7FR introducer	6.6	SSD-10-I
Attached silicone catheter with 8FR introducer	7.5	SSA-14-I
Detached silicone catheter with 8FR introducer	7.5	SSD-14-I
Attached silicone catheter with 10FR introducer	9.6	SSA-16-I
Detached silicone catheter with 10FR introducer	9.6	SSD-16-I

Single Plastic Port	French	Part #
Attached silicone catheter with 8FR introducer	7.5	SPA-14-I
Detached silicone catheter with 8FR introducer	7.5	SPD-14-I
Attached silicone catheter with 10FR introducer	9.6	SPA-16-I
Detached silicone catheter with 10FR introducer	9.6	SPD-16-I

Low-Profile Titanium Port	French	Part #
Attached silicone catheter with 7FR introducer	6.6	PSA-10-I
Detached silicone catheter with 7FR introducer	6.6	PSD-10-I

USA > One Horizon Way, Manchester, GA 31816 > tel: 800.472.5221 or 706.846.3126 > fax: 877.467.9501 or 706.846.3146
 International > Mechelsesteenweg 251, B-1800 Vilvoorde, Belgium > tel: +32-2 252 12 02 > fax: +32-2 252 14 08

www.ritamaterial.com

©2006 RITA Medical Systems, Inc. pn 0167M rev: A

TitanPort™

BENEFITS:

- > Blue boot locking mechanism
- > MRI compatible
- > Latex-free

TITANPORT™ TRAY COMPONENTS:

- > (1) TitanPort™ Port System
- > (1) Silicone Catheter
- > (2) Locking mechanisms (detached models)
- > (1) 22 Ga Non-coring needle
- > (1) 18 Ga Introducer needle
- > (1) PeelPro™ PTFE Introducer
- > (1) Guidewire, 0.035" x 50 cm
- > (2) 10 cc syringes
- > (1) Vein pick
- > (1) Blunt needle (detached models)
- > (1) Tunneler

TITANPORT™ KIT COMPONENTS:

- > (1) TitanPort™ Port System
- > (1) Silicone Catheter
- > (1) Locking mechanism (detached models)
- > (1) 22 Ga Non-coring needle
- > (1) Vein pick

The TitanPort™ line offers titanium models with silicone catheters.



Single Titanium Port	French	Part #
Detached silicone catheter with 8FR Introducer	7.2	P4355K
Attached silicone catheter with 8FR Introducer	7.2	P4305K
Detached silicone catheter with 10FR Introducer	9.6	P4455K
Attached silicone catheter with 10FR Introducer	9.6	P4405K
Detached silicone catheter	7.2	P4355
Detached silicone catheter	9.6	P4455

USA > One Horizon Way, Manchester, GA 31816 > tel: 800.472.5221 or 706.846.3126 > fax: 877.467.9501 or 706.846.3146
 International > Mechelsesteenweg 251, B-1800 Vilvoorde, Belgium > tel: +32-2 252 12 02 > fax: +32-2 252 14 08

Vortex® MP

BENEFITS:

- > Latex-free/MRI compatible
- > Indicated for peripheral or chest placement
- > Fluoromax® catheter—high radiopaque tip allows for greater distinction between catheter and tip to aid in confirming ideal tip placement. Marked catheters are available in polyurethane and silicone
- > Low-profile design—the Vortex® MP's low profile design, ideal for chest or peripheral placement, means minimally invasive procedures for your patients
- > Snap-lock™ mechanism—Snap-lock™ allows the confirmation of a secure attachment with feel, sight and sound of placement
- > Largest septum diameter of any peripheral port*—the Vortex® MP features a greater target area for ease of access (*based upon measurements performed in house. Results on file)
- > Available in 5 french size

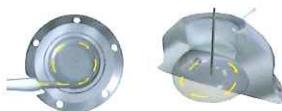
VORTEX® MP KIT COMPONENTS:

- > (1) Vortex® MP Titanium Low-Profile Port System
- > (1) Fluoromax® Catheter
- > (2) Locking mechanisms
- > (1) Non-coring needle, 22 Ga
- > (1) Blunt needle, 18 Ga
- > (1) Vein pick

VORTEX® MP TRAY COMPONENTS:

- > (1) Vortex® MP Titanium Low-Profile Port System
- > (1) Fluoromax® Catheter
- > (2) Locking mechanisms (detached models)
- > (1) Non-coring needle, 22 Ga
- > (1) Blunt needle, 18 Ga
- > (1) Introducer needle, 21 Ga x 7 cm (2.75 in)
- > (1) PeelPro™ PTFE MicroAccess Introducer, 5Fr x 10 cm
- > (1) PeelPro™ PTFE Introducer, 5Fr x 15 cm
- > (1) Nitinol Guidewire, 0.018" x 125 cm, marked
- > (1) Nitinol Guidewire, 0.018" x 40 cm
- > (2) 10cc Syringes
- > (1) Vein pick
- > (1) LifeGuard™ safety infusion set
- > (1) Tunneler (silicone models only)

100% Guaranteed Against Sludge Buildup—Ask your RITA sales representative for details.



VORTEX®:

Tangential outlet and clear-flow technology set up efficient flushing action to hyper-cleanse the entire chamber, resist sludge build-up and reduce occlusions and infections.



CONVENTIONAL:

Perpendicular outlet produces chaotic flow and inefficient flushing, with square corners that promote the formation of sludge within dead space.

IN A CLINICAL STUDY*

the Vortex® port had:

7% Occlusions as % of total access attempts

19% Interventions as % of total access attempts

Conventional ports had:

26% Occlusions as % of total access attempts

62% Interventions as % of total access attempts

* Lead Investigator, "A Randomized, Prospective Trial of Conventional Vascular Ports vs. The Vortex "Clear-Flow" Reservoir Port in Adult Oncology Patients", JVAD, Summer 2000.

Single Titanium Port	French	Part #
Detached polyurethane catheter with 5FR introducer	5	MP-P5PT
Detached polyurethane catheter	5	MP-P5PK
Attached silicone catheter with 5FR introducer	5	MP-P5SAT
Detached silicone catheter with 5FR introducer	5	MP-P5SDT

USA > One Horizon Way, Manchester, GA 31816 > tel: 800.472.5221 or 706.846.3126 > fax: 877.467.9501 or 706.846.3146
International > Mechelsesteenweg 251, B-1800 Vilvoorde, Belgium > tel: +32-2 252 12 02 > fax: +32-2 252 14 08

www.ritamaterial.com

©2006 RITA Medical Systems, Inc. pn 0161M rev: A

LifePort®

BENEFITS:

- > Patented bayonet locking mechanism
- > MRI compatible
- > Latex-free
- > Titanium and plastic models
- > Silicone and polyurethane catheters

LIFEPORT® KIT COMPONENTS:

- > (1) LifePort® Port System
- > (1) Catheter
- > (2) Locking mechanisms
- > (1) Infusion set, 20 Ga x 1" (dual models contain 2 infusion sets)
- > (1) Non-coring needle, 22 Ga

LIFEPORT® TRAY COMPONENTS:

- > (1) LifePort® Port System
- > (1) Catheter
- > (2) Locking mechanisms (detached models)
- > (1) Introducer needle, 18 Ga
- > (1) Vein pick
- > (1) PeelPro™ PTFE Introducer
- > (1) Guidewire, 0.035" x 50 cm
- > (1) Blunt needle (detached models)
- > (1) Tunneler
- > (2) 10 cc Syringes
- > (1) Infusion Set, 20 Ga x 1" (dual models contain 2 infusion sets)
- > (1) Non-coring needle, 22 Ga



Dual Lumen

Single Models

Single Titanium Port	French	Part #
Attached silicone catheter with 10FR introducer	9.6	LPS5015
Detached silicone catheter with 10FR introducer	9.6	LPS5013
Detached silicone catheter	9.6	LPS1013
Single Titanium Port	French	Part #
Detached polyurethane catheter with 9FR introducer	8.4	LPS5513
Single Plastic Port	French	Part #
Attached silicone catheter with 10FR introducer	9.6	LPS7015
Detached silicone catheter with 10FR introducer	9.6	LPS7013
Single Plastic Port	French	Part #
Attached polyurethane catheter with 9FR introducer	8.4	LPS7515
Detached polyurethane catheter with 9FR introducer	8.4	LPS7513

Dual Models

Dual Titanium Port	French	Part #
Attached silicone catheter with 12FR introducer	11.4	LPS5200
Dual Plastic Port	French	Part #
Detached silicone catheter with 12FR introducer	11.4	LPS7113
Dual Plastic Port	French	Part #
Detached polyurethane catheter with 10FR introducer	9.6	LPS7523

Low-Profile Models

Low-Profile Titanium Port	French	Part #
Detached silicone catheter	6.9	LPS1055
Detached silicone catheter with 10FR introducer	8.4/9.6	LPS5057
Low-Profile Titanium Port	French	Part #
Detached polyurethane catheter with 6FR introducer	5.7	LPS5555

Dual Low-Profile

Dual Low-Profile Plastic Port	French	Part #
Detached polyurethane catheter with 7FR introducer	6.6	LPS7255

USA > One Horizon Way, Manchester, GA 31816 > tel: 800.472.5221 or 706.846.3126 > fax: 877.467.9501 or 706.846.3146
 International > Mechelsesteenweg 251, B-1800 Vilvoorde, Belgium > tel: +32-2 252 12 02 > fax: +32-2 252 14 08

www.ritamaterial.com

©2006 RITA Medical Systems, Inc. pn 0164M rev: A

Vortex® LP

BENEFITS:

- > Latex-free/MRI compatible
- > Atraumatic tip catheter—tapered to reduce vessel trauma
- > Bayonet locking mechanism—our patented technology means secure procedures with fewer complications
- > Complete size offerings—the Vortex® LP is available in plastic and titanium, with single, dual and low-profile options
- > Large septum diameter - The Vortex® LP features a greater target area for ease of access

VORTEX® LP KIT COMPONENTS:

- > (1) Vortex® LP Port System
- > (1) Catheter
- > (2) Locking mechanisms
- > (1) Non-coring needle, 22 Ga
- > (1) Introducer needle, 18 Ga
- > (1) Vein pick
- > (1) PeelPro™ PTFE Introducer
- > (1) 0.035" x 50 cm Guidewire
- > (1) Infusion set*
- > (1) Blunt needle (detached models)
- > (1) Tunneler
- > (2) 10cc Syringes

*dual model contains 2 infusion sets

VORTEX® LP KIT COMPONENTS:

- > (1) Vortex® LP Port System
- > (1) Catheter
- > (1) Infusion set
- > (2) Locking mechanisms
- > (1) Non-coring needle, 22 Ga

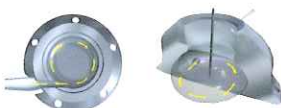


Single Plastic Model



Dual Titanium Model

100% Guaranteed Against Sludge Buildup—Ask your RITA sales representative for details.



VORTEX®:

Tangential outlet and clear-flow technology set up efficient flushing action to hyper-cleanse the entire chamber, resist sludge build-up and reduce occlusions and infections.



CONVENTIONAL:

Perpendicular outlet produces chaotic flow and inefficient flushing, with square corners that promote the formation of sludge within dead space.

Single Titanium Port	French	Part #
Detached silicone catheter	9.6	LVTX1013
Detached silicone catheter with 10FR introducer	9.6	LVTX5013
Attached silicone catheter with 10FR introducer	9.6	LVTX5015
Detached polyurethane catheter with 9FR introducer	8.4	LVTX5513
Dual Titanium Port	French	Part #
Detached silicone catheter with 12FR introducer	11.4	LVTX5213
Low-Profile Titanium Port	French	Part #
Detached silicone catheter	6.9	LVTX1055
Detached silicone catheter with 10FR introducer	8.4/9.6	LVTX5057
Detached polyurethane catheter with 6FR introducer	5.7	LVTX5555
Detached polyurethane catheter with 9FR introducer	8.4	LVTX5557
Single Plastic Port	French	Part #
Detached silicone catheter with 10FR introducer	9.6	LVTX7013
Attached silicone catheter with 10FR introducer	9.6	LVTX7015
Detached polyurethane catheter with 9FR introducer	8.4	LVTX7513
Attached polyurethane catheter with 9FR introducer	8.4	LVTX7515

USA > One Horizon Way, Manchester, GA 31816 > tel: 800.472.5221 or 706.846.3126 > fax: 877.467.9501 or 706.846.3146
 International > Mechelsesteenweg 251, B-1800 Vilvoorde, Belgium > tel: +32-2 252 12 02 > fax: +32-2 252 14 08

www.ritamedical.com

©2006 RITA Medical Systems, Inc. pn 0160M rev: A

Infuse-A-Port®

BENEFITS:

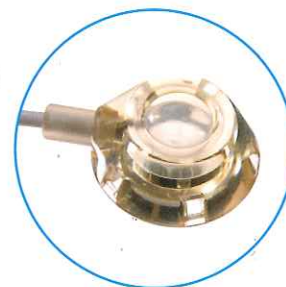
- > Venous, arterial and peritoneal choices
- > Single, dual and low profile models
- > MRI compatible
- > Latex-free
- > Light-weight polysulfone construction

INFUSE-A-PORT® KIT COMPONENTS:

- > (1) Infuse-A-Port® Port System
- > (1) Catheter
- > (2) Locking mechanisms (detached models)
- > (1) Non-coring needle, 22 Ga

INFUSE-A-PORT® TRAY COMPONENTS:

- > (1) Infuse-A-Port® Port System
- > (1) Catheter
- > (2) Locking mechanisms (detached models)
- > (1) Introducer needle, 18 Ga
- > (1) PeelPro™ PTFE Introducer
- > (1) Guidewire, 0.035" x 50 cm
- > (2) 10 cc Syringes
- > (1) Vein pick
- > (1) Blunt needle (detached models)
- > (1) Non-coring needle, 22 Ga



Single Lumen	Single Plastic Port			French	Part #
	Attached silicone catheter			7.5	38938
	Detached silicone catheter			7.5	39599
	Attached silicone catheter			7.5	38942
	Detached silicone catheter with 8FR introducer			7.5	40057
	Attached silicone catheter with 8FR introducer			7.5	40050
	Attached silicone catheter			9.6	38944
	Detached silicone catheter with 10FR introducer			9.6	40058
Low-Profile	Low-Profile Plastic Port			French	Part #
	Detached silicone catheter with 6FR introducer			6.0	41459
	Detached silicone catheter			6.0	39616
Dual Lumen	Dual Plastic Port			French	Part #
	Attached silicone catheter with 10FR introducer			9.9	41429
Arterial Ports	Single Arterial Plastic Port			French	Part #
	Attached beaded silicone catheter			6.9	38940
	Detached beaded silicone catheter			6.9	39514
	Detached beaded silicone catheter			6.9	39615
Peritoneal Ports	Single Peritoneal Plastic Port			French	Part #
	Attached silicone catheter with cuff			14.1	38946
	Detached silicone catheter with cuff			14.1	39105

13 in
8 in.